

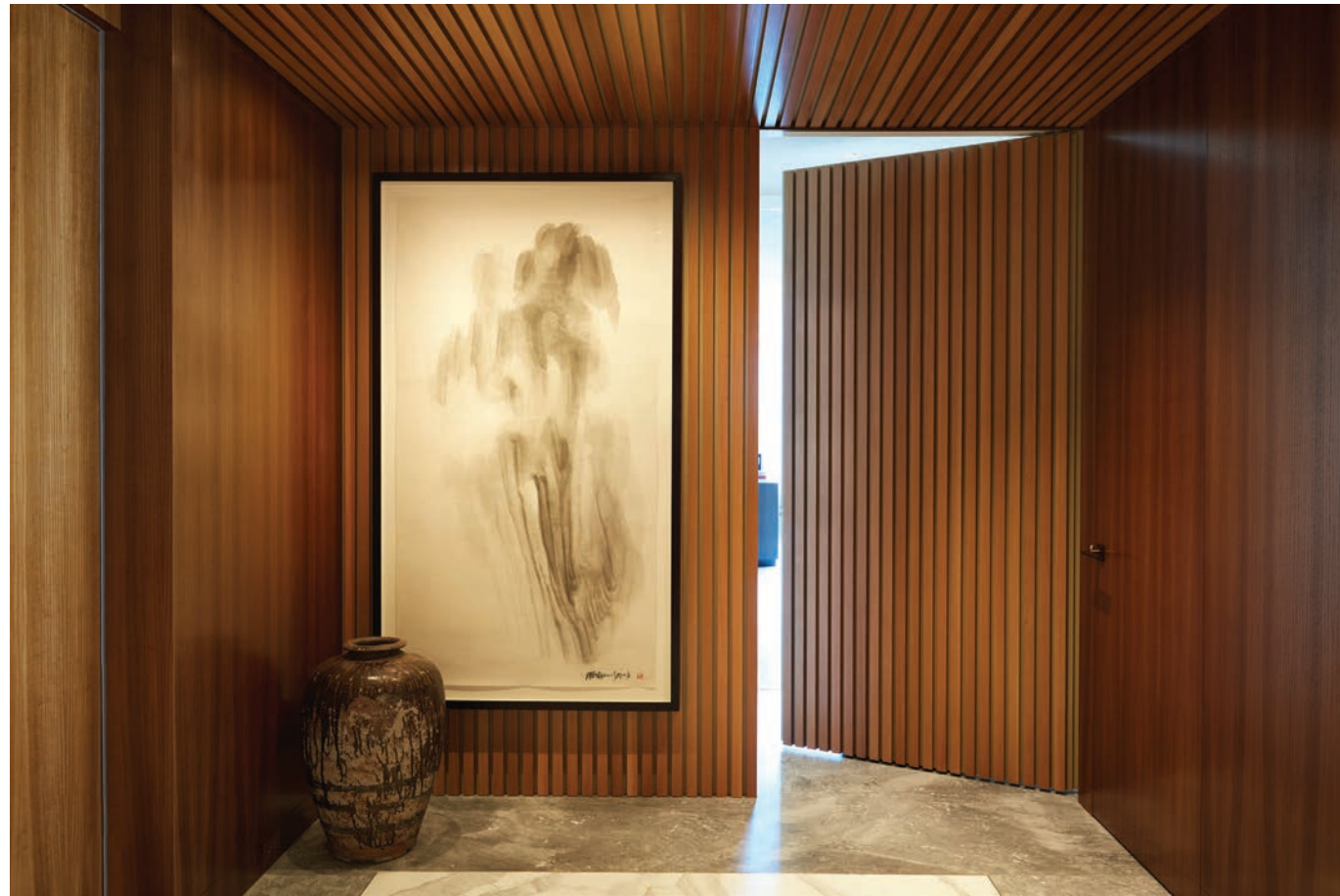
# GALLERY IN THE SKY

THE WISEMAN GROUP  
SHOWCASES ART IN  
A SAN FRANCISCO  
PENTHOUSE

TEXT **KENDRA BOUTELL**  
PHOTOGRAPHY **ROGER DAVIES**

Beijing artist Shao Fan's "Jie" Chair takes center stage in the combined sitting and living room. Wiseman and Alves echoed the bronze supports of the open étagère with CASTE's cast bronze floor lamp silhouetted against the San Francisco skyline.





“Working with a great architecture and design team and clients who have intellectual curiosity made this project one of my favorites.”

—PAUL VINCENT WISEMAN



**P**AUL VINCENT WISEMAN, the founder of The Wiseman Group, took his design inspiration for a recent project from Beijing artist Shao Fan’s “Jie Chair.” The three-dimensional art piece, juxtaposes Ming Dynasty values with contemporary aesthetics illustrating the changes in modern-day China. Associate Design Director Luis Alves joined Wiseman to work on the penthouse apartment in San Francisco’s Four Seasons Residences, where they showcased their clients’ vast collection of Asian art, including antique Yixing clay teapots. San Francisco’s mercurial cityscape became the backdrop for old and new pieces.

The remodel and redesign project involved Huang Iboshi Architecture. For Emily Huang and Gregory Iboshi, The Humble Administrator’s Garden in Suzhou, China, influenced their design. Its Ming Dynasty garden features exquisite views that gradually reveal themselves like unrolling a scroll painting. The penthouse begins with an entrance gallery where the team installed museum-quality displays and lighting, allowing the homeowners to curate and rotate their extensive art collection. Moving through the hallway, it segues to a generous space divided into tea, sitting, living, and dining rooms.



**OPPOSITE TOP** The clients’ art collection served as the focal point of the penthouse, and the team created layers of spaces to display the pieces while prioritizing light sensitivity. Shanghai artist Xu Longsen’s painting *Mountain* sets a serene tone at the gallery entrance.

**OPPOSITE LEFT** One of the homeowner’s fathers owned a teapot museum in China. His collection of antique Yixing clay teapots floats on shelving, resembling a modern reinterpretation of the traditional Chinese cloud motif. The slatted wood ceiling connects the entrance and main living spaces.

**ABOVE** A patinated metal sculpture by Irene Zack from Lebreton Gallery merges with the cityscape. The Wiseman Group and Huang Iboshi Architecture collaborated with Saturn Construction on the project. The team enhanced the views with architectural mirrored corners.





In the tea room, chairs with Imperial Yellow silk seat cushions fit flush with each other and the dining table for a modern interpretation of a Lutyens' design. Yixing clay teapots float on wood shelves with bronze supports in an open *étagère*. The adjacent sitting room is visible through the shelving. Four cloud-like lounge chairs from CASTE upholstered in a celestial blue chenille fabric surround a circular wood and metal coffee table from Gregorius|Pineo. Wiseman and Alves nested ottomans underneath the table

covered in azure alpaca from Sandra Jordan. The designers anchored the sitting and living rooms with a custom Martin Patrick Evan wool and silk area rug in watery blues. Randolph & Hein's streamlined curved sofa echoes the Post-Modern lines of the Marriott Marquis high-rise tower viewed from the skyline. Built-in window seats cleverly hide ledges while adding seating. A round brass cocktail table by Welsh-born artist Damian Jones centers the conversation grouping. In addition to their Asian art, the

homeowners collect European Modernist prints. Six of Le Corbusier's 1955 folio lithographs, *Le Poème de L'Angle Droit*, embellish the dining room. Hudson Furniture's sculptural contemporary bronze chandelier hung horizontally from a ceiling soffit illuminates a circular wood dining table with a dramatic spiral base. High back upholstered side chairs from Bright encourage languorous dining, while the table's inset Lazy Susan allows family and friends to share meals in traditional Chinese style. **CH**



**LEFT** Window seats in the kitchen and family room hide window ledges while providing additional seating. The design team commissioned C. Mariani Antiques to craft the custom elm window seats.

**BELOW** A trio of Juin Ho's suspension cable fixtures illuminates the kitchen with bubble cast-glass and red cord. Four-barrel back armchairs from Bright covered in Dualoy Leather facilitates casual dining.

**OPPOSITE** In the tea room, the designers worked with Thomas Sellars Furniture and Jafe Custom Finishing on the custom piece that functions as a center table and a tea table. They chose Hilde-Brand Furniture, with imported fabric from Jim Thompson, for the chairs' seat cushions.







In addition to their Asian art, the homeowners collect European Modernist prints. Six of Le Corbusier's 1955 folio lithographs, *Le Poème de L'Angle Droit*, embellish the dining room.

**ABOVE** Stephen Sera's bronze bowl accessorizes Randolph & Hein's classic Trinity Dining Table. An opulent ombre alpaca from Great Plains in a fog-hued colorway upholsters the dining chairs.

**RIGHT** The kitchen segues into the family room, where Holly Hunt's Caspian Sofa pairs with a walnut and linen coffee table from Joseph Jeup. Above the sofa, The Wiseman Group installed six pochoirs from Joan Miró's "*Constellation*" series framed by Cadre.



**ABOVE** Guest room with a view, a tufted window seat cushion, and bolsters in a plum-colored Pierre Frey textile encourage daydreaming. Custom wall bracket sconces by Phoenix Day flank the picture window.

**RIGHT** Even the guest bath displays the homeowners' art. "It was fun and rewarding to go through the design process being able to select art and incorporate additional pieces into our design. The clients are truly art lovers!" said Alves.

